

# OVPR RESEARCH TOWN HALL

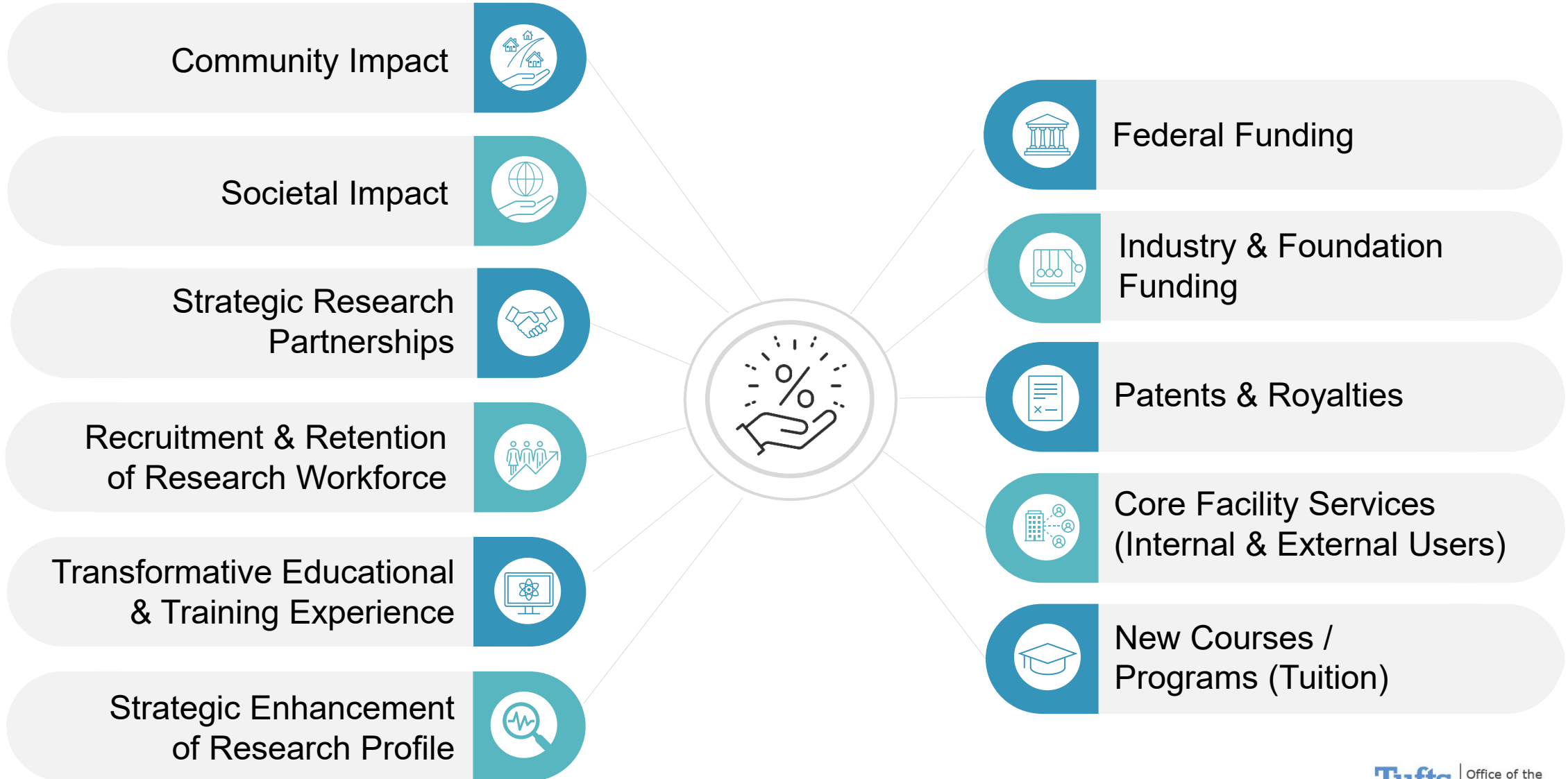
---

Caroline Attardo Genco, PhD  
Vice Provost for Research  
Friday, December 17, 2021

# Overview

- Research and Scholarship Highlights
- Looking Ahead - Continuing Research Support and Priorities
- A Coordinated Strategy – Education & Research

# Research and Scholarship



# Leveraging Tufts' Research Strengths to Respond to the COVID-19 Pandemic

## Research Study Project

- COVID-19 School Re-Entry Research Study

## Seed Funding Programs

- Tufts Medical Center/Tufts University COVID-19 Rapid Response Seed Funding Program (*9 awards*)
- Tufts Medical Center/Tufts University COVID-19 Seed Funding Program – Phase 2 Awards (*8 awards*)

## COVID-19 Research Group

- Grown from 30 to 270 researchers from Tufts and TMC
- Strengths in animal hosts, immunity and disease, public health, social, economic and political impacts, technology and development, and virology

## Events



## Tufts Research Forums & Seminars

- Successes and Challenges of the COVID-19 Vaccine Rollout in the Global Context
- Transdisciplinary Methods in COVID-19 Research

# Tufts Researchers Make a Difference in the World Around Us



EXPLAINER

## Do masks hurt speech development? It depends on the child

As the pandemic continues, experts are divided over the potential risks and benefits of masks for preschoolers

By ALEX HAZLETT PUBLISHED SEPTEMBER 22, 2021 8:45AM (EDT)



Children playing in the park in face masks (Getty Images)

[https://www.salon.com/2021/09/22/do-masks-hurt-speech-development-it-depends-on-the-child\\_partner/](https://www.salon.com/2021/09/22/do-masks-hurt-speech-development-it-depends-on-the-child_partner/)



Home / News / Health News

## How the COVID Pandemic Made the Opioid Epidemic Worse, Even as Telehealth Helped

Oct. 1, 2021, at 8:00 a.m.



<https://www.usnews.com/news/health-news/articles/2021-10-01/how-the-covid-pandemic-made-the-opioid-epidemic-worse-even-as-telehealth-helped>

## Offshore wind grid woes may be worse than previously thought

By Heather Richards | 12/06/2021 07:50 AM EST



Deepwater Wind's turbines stand in the water off Block Island, R.I. Rodrigue Ngowi/AP Photo

<https://www.eenews.net/articles/offshore-wind-grid-woes-may-be-worse-than-previously-thought/>

## A Heart-Healthy Way to Eat

Aim for an overall healthful dietary pattern, the American Heart Association advises, rather than focusing on “good” or “bad” foods.



<https://www.nytimes.com/2021/11/29/well/eat/heart-healthy-diet-foods.html>

# Tufts Researchers Make a Difference in the World Around Us



- **Feed the Future Innovation Lab for Nutrition** (*Friedman School*)
- **Legacy Effects of CALERIE, a 2-Year Calorie Restriction Intervention, on Hallmarks of Healthspan and Aging** (*HNRCA*)
- **Integrated Approaches to Enhance Sustainability, Resiliency and Robustness in US Agri-Food Systems: Enabling Cellular Agriculture with Cross-Disciplinary Approaches** (*SOE & Friedman School*)
- **Functional Analysis of Cellular Diversity and Cell-Cell Interactions in Scleroderma 3D Skin-Like Tissues** (*TUSDM*)
- **Strategies to Prevent Spillover (STOP Spillover)** (*University-Wide*)



- **Synthetic Living Machines and the Emergence of Purpose** (*A&S*)
- **Digital Portfolios of the Poor** (*Fletcher School*)
- **Applied Brain and Cognitive Science Collaborative Effort** (*SOE*)
- **GEER Fund Early Literacy Tutors** (*Tisch*)



# Tufts Researchers Make a Difference in the World Around Us



- **DuPage County RSA - Democracy School Survey** (*Tisch*)
- **Supporting and Amplifying Local Organizations Engaged in Playful Engineering-Based Learning (PEBL) Post-COVID** (*SOE*)



The LEGO Foundation



- **Establishing a State-of-the-Art Comparative Infectious Disease Pathology Core to Accelerate Translational Research** (*Cummings School*)
- **Facility Upgrade for the New England Regional Biosafety Laboratory** (*Cummings School*)



- **Tufts IRACDA (TUSM)**





# Leveraging Tufts Research Ecosystem to Build Strategic Partnerships

Growth in invention disclosures: >20%

Start-up companies: 17

Intellectual property Licenses: 40

Intellectual property revenue: >\$20M

Commercialization grants: 15 awards

Established robust company incubator facility

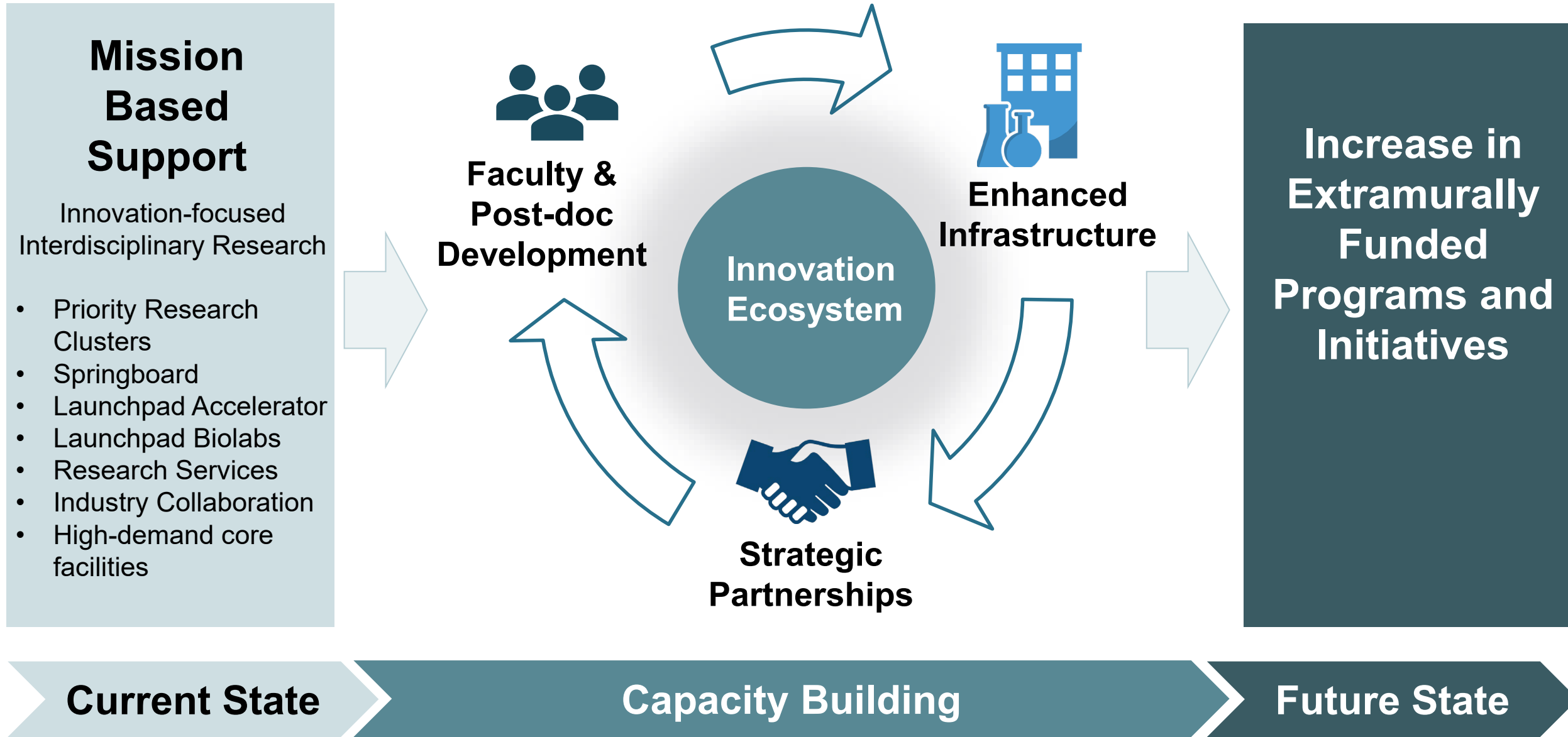


**LOOKING AHEAD**

**CONTINUING RESEARCH SUPPORT  
AND PRIORITIES**

---

# Investment for Growth and Sustainability in Research and Scholarship



# How We Get There

## Existing Strengths

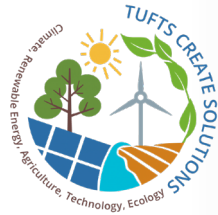


## RSSP 2018



## Outcomes

Off-Shore Wind  
Climate Policy,  
Fletcher



Climate, Renewable Energy, Agriculture, Technology, and Ecology (CREATE) Solutions

PhD Program in Off-Shore Wind  
Tufts Institute for the Environment

Dept. of Microbiology Investment



Stuart S. Levy Center for Integrated Management of Antimicrobial Resistance (Levy CIMAR)

Jointly-Funded Center by Tufts University and Wellforce

Establishment of Mellon-Funded RCD Dept.

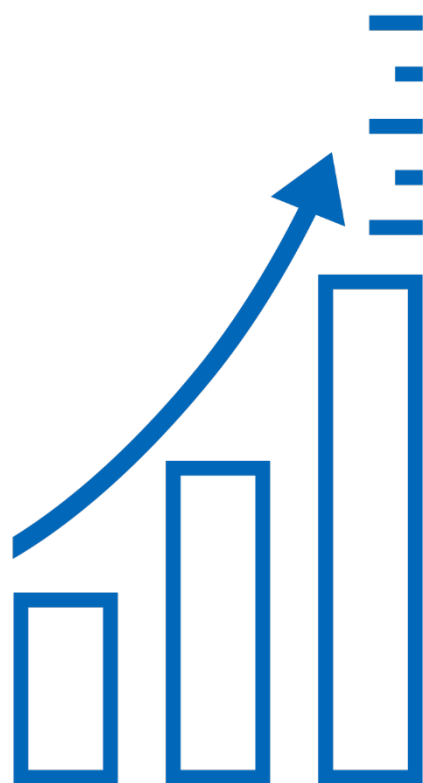


Comparative Race, Society, and Transformation (CRST)

Translating Race Lab

- Robust Educational Programming
- Faculty Recruitment
- Large-scale Center Grants
- Dedicated Space

# Operational Support to Scale Up Research



- COVID-19 pandemic support
- Enhancement of post-docs' benefits
- Team Science programming
- Central team to support large proposals
- Added capacity for award negotiation and subaward management
- Business Development
- Enhanced COI policy & procedure
- Enhanced safety network
- High-demand core facilities

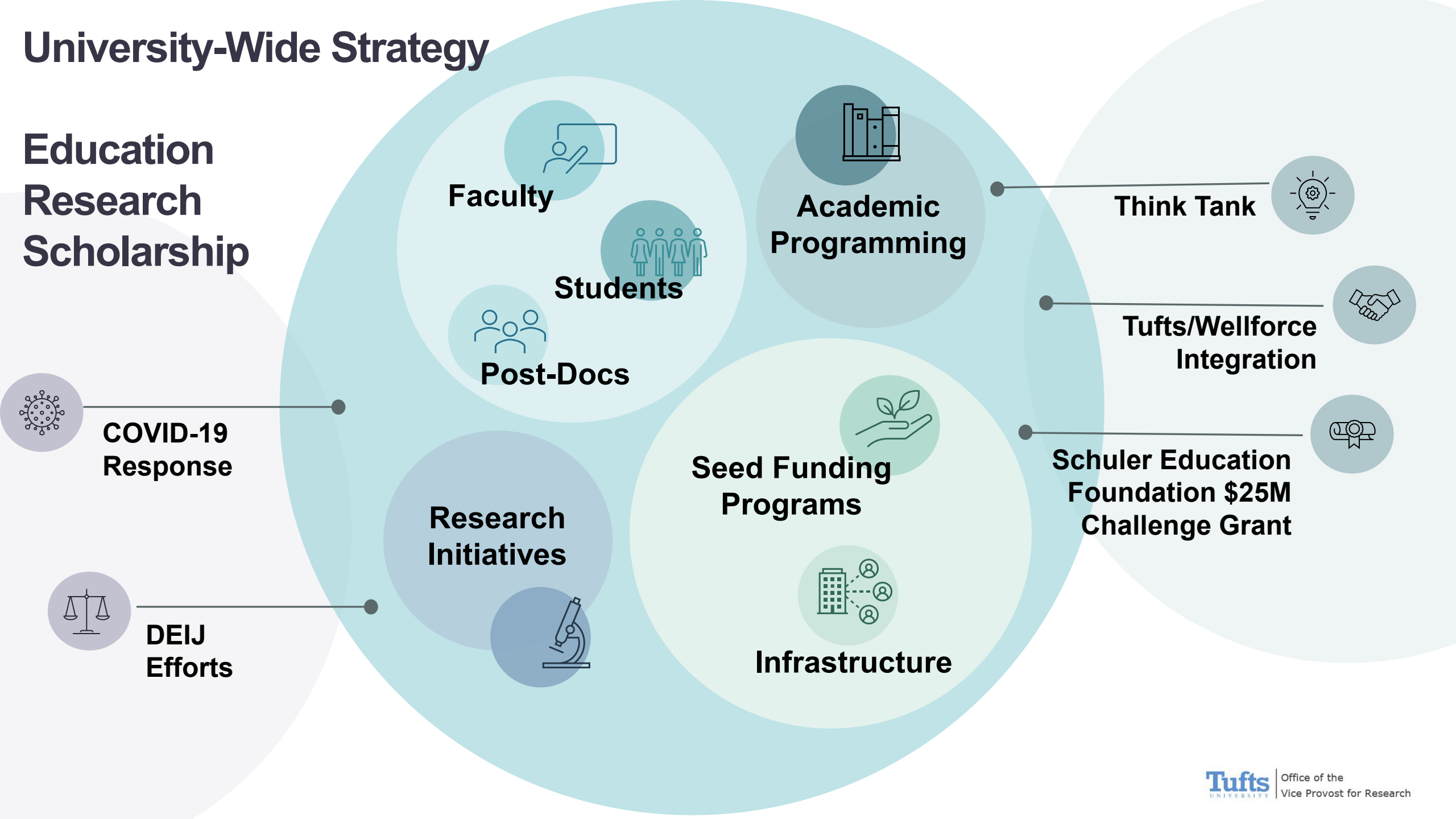
**EDUCATION AND RESEARCH**

**A COORDINATED STRATEGY**

---

# University-Wide Strategy

## Education Research Scholarship



Faculty

Academic  
Programming

Students

Post-Docs

Think Tank

Tufts/Wellforce  
Integration

COVID-19  
Response

Schuler Education  
Foundation \$25M  
Challenge Grant

Research  
Initiatives

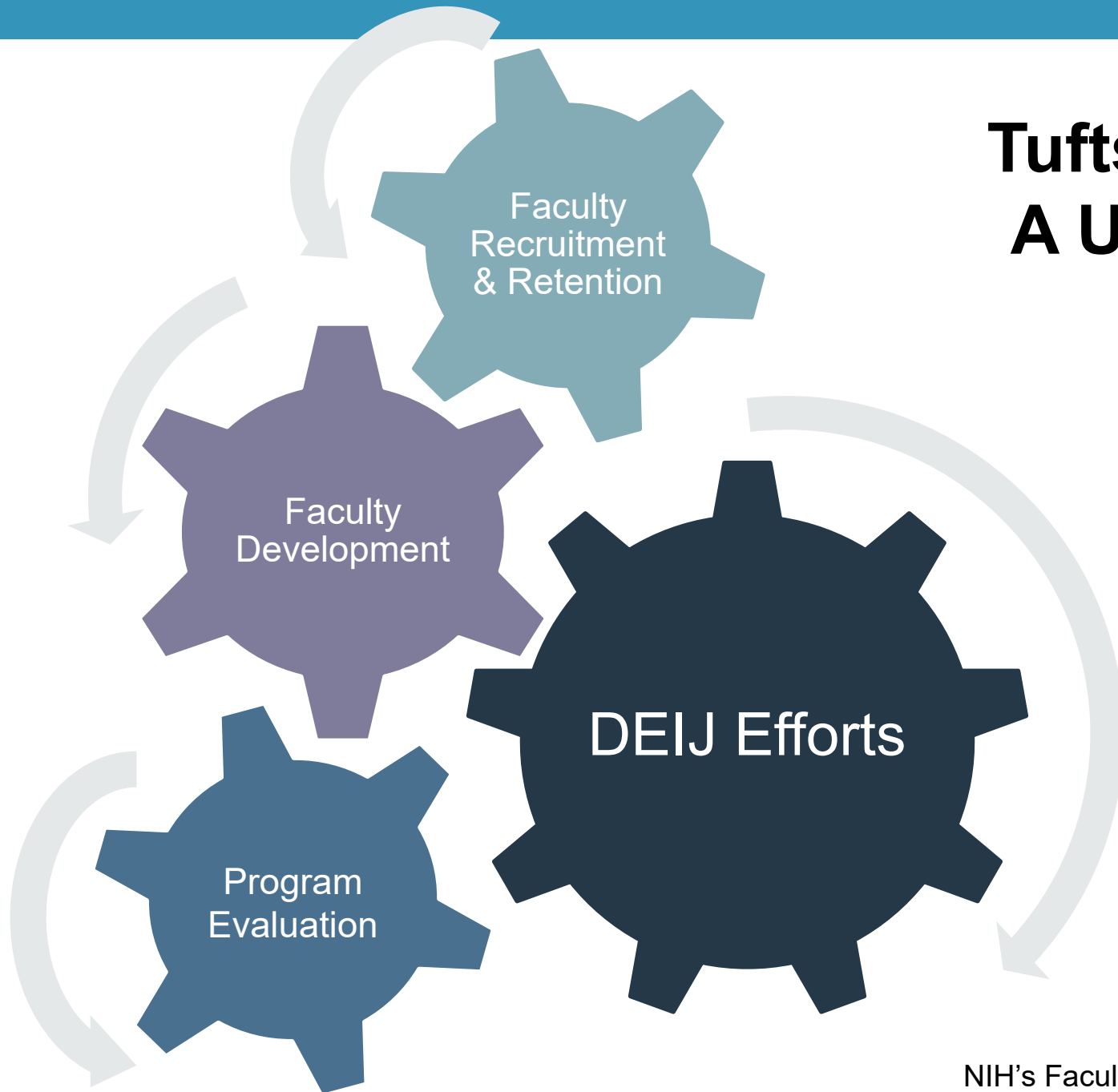
Seed Funding  
Programs

DEIJ  
Efforts

Infrastructure

# Tufts FIRST Cohort Program

## A University-Wide Strategy



- Coordinated hiring practices and recruitment strategies across schools
- Changes to tenure and promotion processes
- Innovative models for mentoring, development and leadership
- Evaluation of baseline and short-range outcomes with a focus on continuous improvement
- Substantial institutional commitment and coordination



# Think Tank

Advisory Group to support VPR major initiatives and long-term scholarship planning.

- **Align** our research enterprise with University Strategic Priorities.
- Drive **forward-looking, innovative avenues**.
- **Initial Brainstorming**
  - Limitations to innovation at Tufts?
  - Routine approaches that inhibit productivity and/or innovation?
  - Unique / new opportunities for strong, forward-looking, innovative approaches?

# Think Tank Members

- Chris Economos (Friedman) - Childhood obesity - Behavior, policy, & environmental
- Pilar Alcaide (TUSM) - Adaptive immunity
- Addy Alt-Holland (Dental) - 3-D tissue models of cancer
- Adolfo Cuevas (A&S-Community Health) - Health disparities
- Karen Freund (TMC) - Women's health and health disparities
- Jonathan Rundstadler (Cummings) - One health - global infectious diseases
- Kelly Sims Gallagher (Fletcher) - Energy and environmental policy
- Mike Levin (A&S-Biology) - Regenerative medicine
- Peter Levine (Tisch) - Equity and civic engagement
- Matthias Scheutz (SOE) - A/I; Human/Robot interaction
- Ayanna Thomas (A&S-Psychology) - Cognitive aging and memory

# Tufts' Challenge & Reflections During the Pandemic

## Robust Discussion with the VPR Think Tank

How does Tufts:

- Transform itself from the Liberal Arts College model to propel our mission as a student centered R1 institution?
- Position itself to continue to fulfill its mission and values, relative to its core 21st century communities, considering the increasing regularity of pronounced challenges and opportunities?
- Overall
  - Integration of Education & Research across Schools
  - Faculty Diversity, Development, & Leadership

# Goals & Desired Outcomes



← **Building Blocks** →