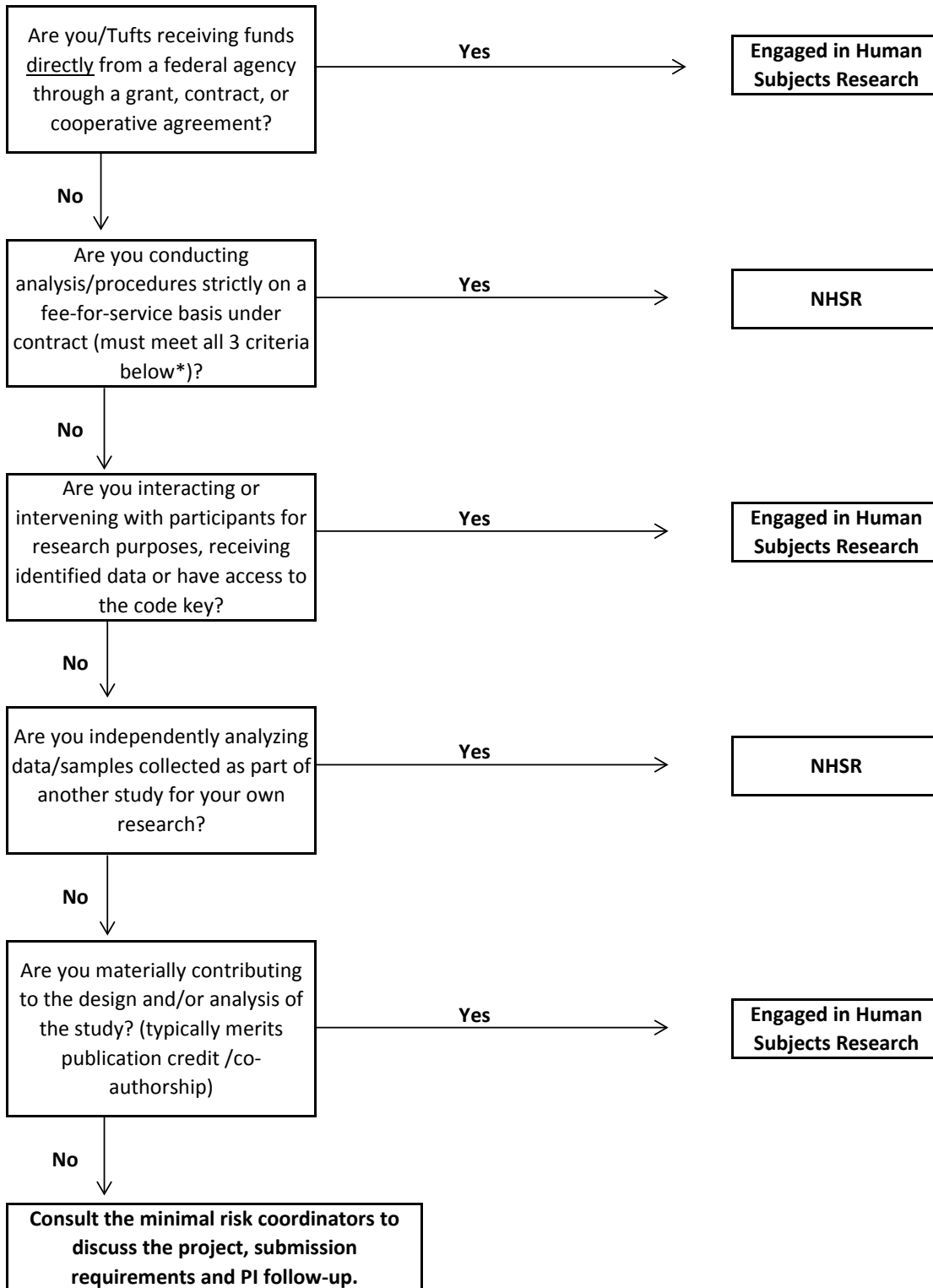


Collaborative Research: Is Tufts Engaged?

This is for IRB Office use only. This tree is designed to help make engagement determinations for collaborative research (primarily data/specimen analysis).

For complete information about engagement in research, please refer to the [full guidance document](#).



* 1 The services performed do not merit professional recognition or publication privileges.

2 The services performed are typically performed by those organizations for non-Research purposes.

3 The organization's employees or agents do not administer any study intervention being tested or evaluated under the protocol.